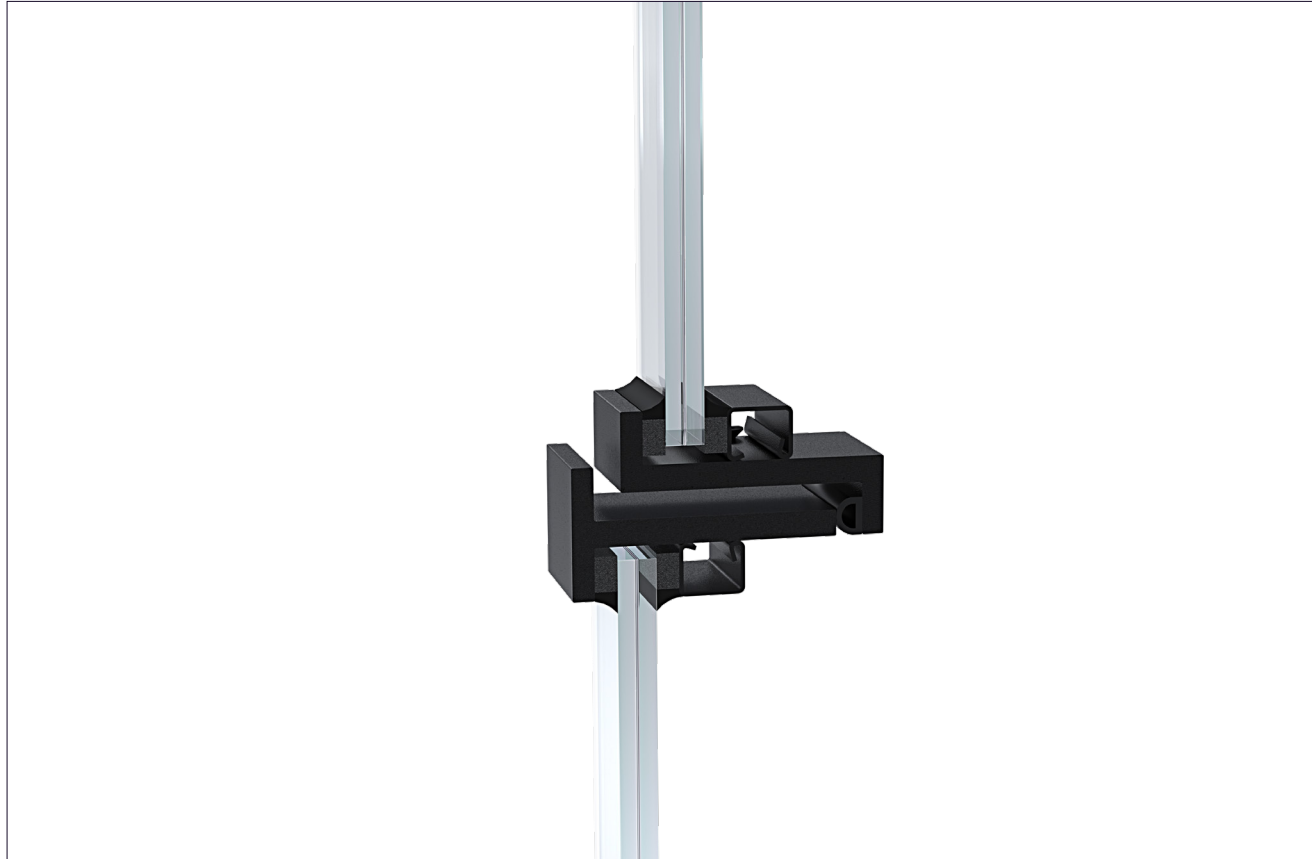


## MHB SL30 Profile system

30 mm / 1 3/16" width | Solid steel profiles | Sharp-edged



## Overview

Building on centuries of expertise in steel mastery, we have crafted our SL30 profile to embody strength, elegance, and precision. This unique profile seamlessly merges the robustness of solid steel with a distinctively sharp-edged aesthetic, resulting in an exceptionally slim design. With a width of just 30 mm (1 3/16"), our SL30 profile not only exudes superior aesthetics but also offers unmatched handling and versatility, making it the perfect choice to add a bespoke touch to any interior space.

- Patented profile system with unique 30 mm (1 3/16") sightlines, providing unmatched aesthetics.
- MHB is the exclusive developer and manufacturer of all its steel profile systems, allowing for optimal adaptability and quality control.
- Customisable true divided or simulated divided glass partitioning and glass stops.
- Create harmony with consistent detailing for interior and exterior configurations in your project.
- Available in any RAL colour or actual precious metals such as bronze for a unique and durable finish.



## Unrivalled freedom to design

MHB is the exclusive developer and manufacturer of all its patented profile systems, which allows us to improve and adapt our products on a project-specific basis. If you have any specific needs or requirements for your project, please let us know and we will work with you to create the optimal solution:

- Custom detailing.
- Custom oversized door dimensions.
- Automated systems.